



INDOFINE Chemical Company, Inc.

121 Stryker Lane, Bldg. 30
Hillsborough, NJ 08844 USA
Phone: (908) 359-6778; Fax: (908) 359-1179

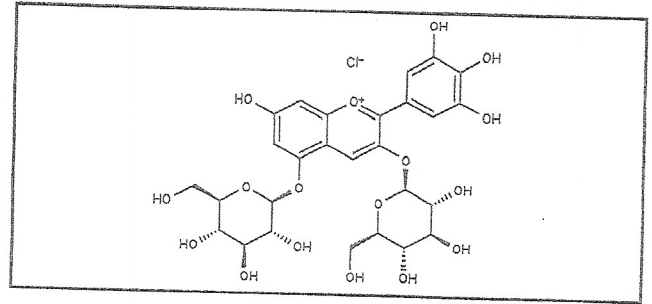
Certificate Of Analysis

020941S

DELPHIN CHLORIDE

Lot No.: 24052208

CAS RN	17670-06-3
MOL FORMULA	C ₂₇ H ₃₁ O ₁₇ Cl
MOL WEIGHT	662,98



TEST	METHOD	UNIT	SPECIFICATION	RESULT
Appearance	Visual		Dark powder	Conform
Potency	UV		ϵ (538 nm, MeOH+0,1% HCl) = 42 000 +/- 2400	42490
Water content	KF	% w/w		2,5
Residual solvents	GC-HS	% w/w		0,2
Inorganics	ICP-MS	% w/w		0,2
Purity	HPLC	% area	$\geq 95,0$	96,8
Assay	Calculated (*)	% w/w		94,0

(*) Assay = Purity by HPLC x (100 - %water - %solvents - %inorganics)

CHROMATOGRAPHIC PURITY / HPLC

Column : Atlantis dC18 - 4,6x150 mm - 3 μ m

Temperature : 30°C

Mobile phase :

Gradient: B from 5% to 60% in 20 min then 60% to 100% in 5 min then 5 min Isocratic 100%

Flow rate : 1 ml/min

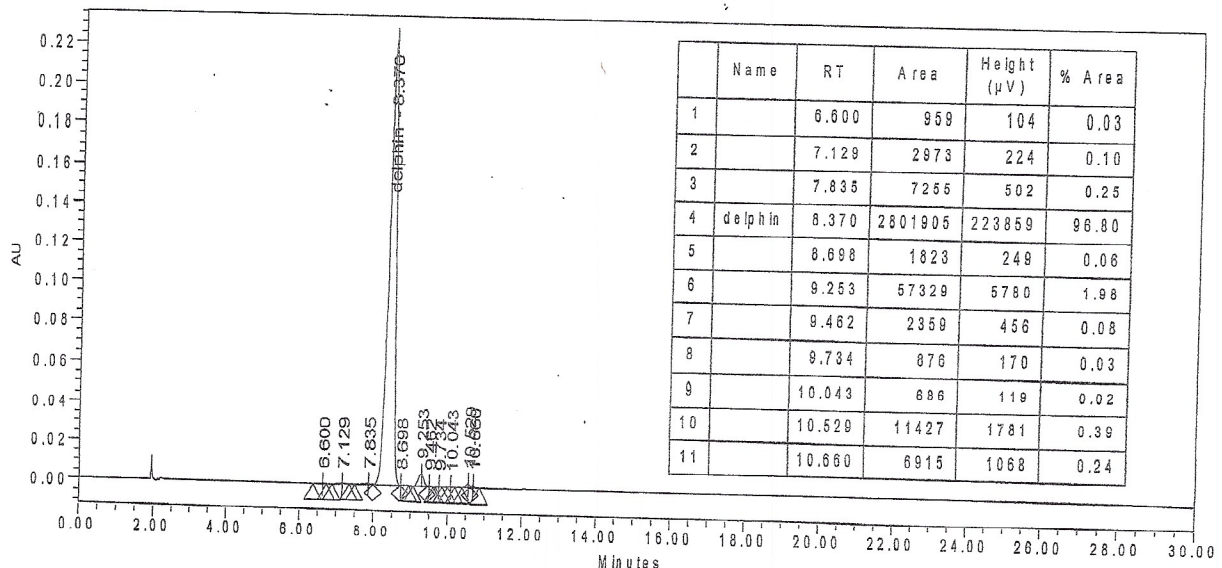
A = Water + 10% HCOOH / B = MeOH

Injection volume : 5 μ l

Detection :

UV 520 nm

Injection solvent : MeOH + 0,1% HCl



LONG TERM STORAGE : Below -15°C in a dry and dark place